

## 100 Watts RF Power For:

- Driving Ultrasonic Transducers
- Testing
- Laboratory Applications



## Featuring:

- 10 KHz – 12 MHz
- Power Measurement
  - Forward & Reflected
- Instantaneous Bandwidth
- Solid State Reliability
- Forced Air Cooling



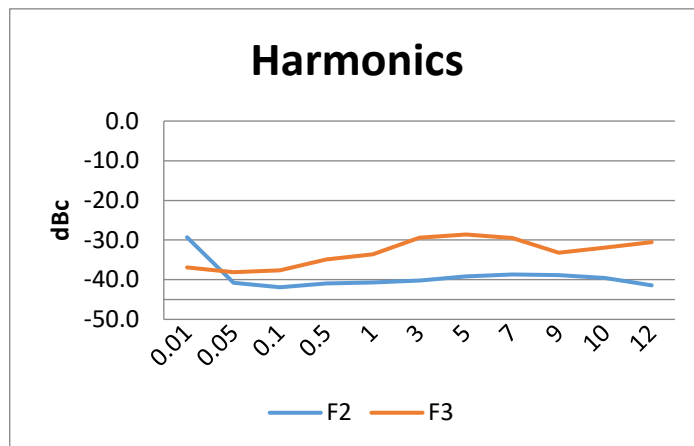
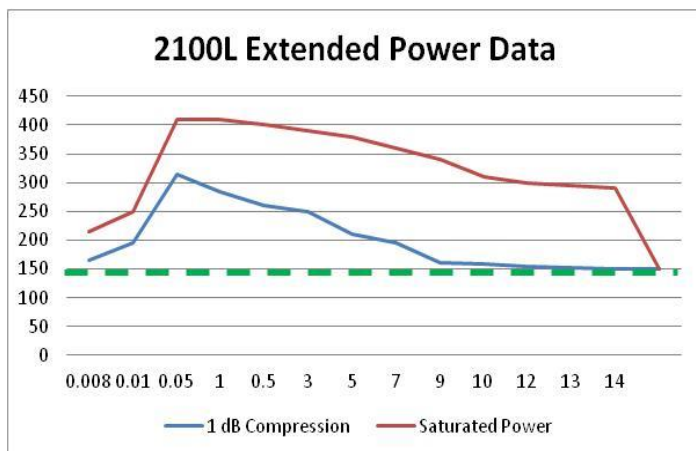
# 2100L POWER AMPLIFIER

## E&I 2100L Specifications\*

|                                    |   |
|------------------------------------|---|
| <b>Class of Operation:</b>         | Class A   |
| <b>Frequency Coverage:</b>         | 10 KHz – 12 MHz   |
| <b>Rated Power:</b>                | 100 Watts P1dB Compression  |
| <b>Saturated Power:</b>            | 150 Watts   |
| <b>Power Gain:</b>                 | 50 dB nominal   |
| <b>Gain Flatness:</b>              | +/- 1.5 dB  |
| <b>Input Power for Rated Pout:</b> | 0 dBm (1 mW)  |
| <b>Input Impedance / VSWR:</b>     | 50 Ω / 1.5:1 maximum  |
| <b>Output Impedance / VSWR:</b>    | 50 Ω / 2:1 maximum  |
| <b>Harmonic Level:</b>             | < -25 dBc @ 100W Pout   |
| <b>Ruggedness:</b>                 | ∞:1 VSWR  |
| <b>Stability:</b>                  | Unconditional into any passive or reactive load                             |
| <b>Protection:</b>                 | Unit will withstand input signal of +13 dBm without damage (1.0 V rms) max. |
| <b>Third Order Intercept:</b>      | IP3 ~ 59 dBm  |
| <b>AC Input:</b>                   | 100 – 240 VAC 47 – 63 Hz  |
| <b>Temperature Range:</b>          | 0° – 40° C  |
| <b>Cooling:</b>                    | Forced Air  |
| <b>Dimensions (H x W x D):</b>     | 5.3 x 16.5 x 18.4 inches<br>134.5 x 420 x 467 mm                            |
| <b>Weight:</b>                     | 32.5 lbs (14.7 Kg)  |
| <b>Connectors:</b>                 | BNC   |
| <b>Rack Mounting:</b>              | Optional  |
| <b>RF Input Signal:</b>            | AM, FM, SSB, Pulsed   |



# 2100L POWER AMPLIFIER



## Protection:

- Software Overdrive Limit: 150 Watts
- Software Reverse Power Limit: 110 Watts

## Performance into 50 ohms

| Input                |       |                |                | Amplifier Gain<br>Nominal<br>dB | Output              |        |                |                |
|----------------------|-------|----------------|----------------|---------------------------------|---------------------|--------|----------------|----------------|
| Input Power<br>Watts | dBm   | V p-p<br>Volts | V rms<br>Volts |                                 | Output Power<br>dBm | Watts  | V p-p<br>Volts | V rms<br>Volts |
| 0.000250             | -6.02 | 0.32           | 0.11           | 50                              | 43.98               | 25.00  | 100.00         | 35.36          |
| 0.0006               | -2.50 | 0.30           | 0.17           | 50                              | 47.50               | 56.25  | 150.00         | 53.03          |
| 0.0010               | 0.00  | 0.63           | 0.22           | 50                              | 50.00               | 100.00 | 200.00         | 70.71          |
| 0.0015               | 1.76  | 0.77           | 0.27           | 50                              | 51.76               | 150.06 | 245.00         | 86.62          |



Electronics & Innovation, Ltd.  
150 Research Blvd.  
Rochester, NY 14623  
Tel: 585-214-0598 / Fax: 585-214-0580  
www.eandiltd.com